

**THE VISUAL AIDS ON THE FOLLOWING  
PAGES ARE FOR REFERENCE ONLY AND  
NOT INTENDED FOR OFFICIAL USE.**

TO PURCHASE OFFICIAL VISUAL AIDS PLEASE CONTACT  
USDA, AMS, Dairy Program, Standardization Division  
1400 Independence Ave., S.W.  
Washington, DC 20250  
Contact Haiping Li, Food Technologist  
Haiping.Li@usda.gov  
Phone 202- 720-1671



0 mg.



0.025 mg.



0.050 mg.



0.075 mg.



0.10 mg.



0.20 mg.



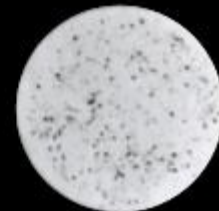
0.30 mg.



0.50 mg.



1.00 mg.



2.50 mg.

United States Department of Agriculture Sediment Standards for Milk and Milk Products.

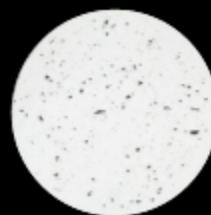
7 CFR 58.2726



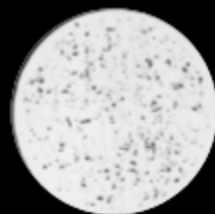
0  
(0.0 mg.)



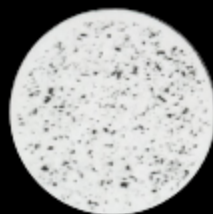
1  
(0.6 mg.)



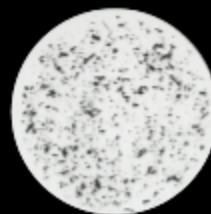
2  
(1.6 mg.)



3  
(2.6 mg.)



4  
(3.0 mg.)



5  
(6.0 mg.)

United States Department of Agriculture  
Sediment Standards for Milk and Milk Products.

Prepared in cooperation with  
U.S. Food and Drug Administration  
and the American Public Health Association.

7 CFR 58.2728



1  
(0.60 mg.)



2  
(1.8 mg.)



3  
(2.8 mg.)

United States Department of Agriculture Sediment  
Standards for Milk and Milk Products.

Prepared in cooperation with U.S. Food and Drug Administration  
and the American Public Health Association.

7 CFR 68.2729



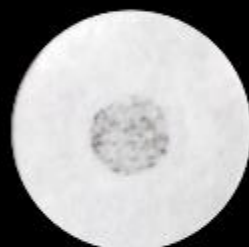
0  
0.0 mg.  
(0.0 mg. equiv.)



1  
0.0625 mg.  
(0.50 mg. equiv.)



2  
0.1875 mg.  
(1.50 mg. equiv.)



3  
0.3125 mg.  
(2.50 mg. equiv.)



4  
0.3750 mg.  
(3.0 mg. equiv.)



5  
0.75 mg.  
(6.0 mg. equiv.)

**United States Department of Agriculture  
Sediment Standards for Milk and Milk Products.**

**Prepared in cooperation with  
U.S. Food and Drug Administration  
and the American Public Health Association.**

7 CFR 58.2730



1  
0.0625 mg.  
(0.50 mg. equiv.)



2  
0.1875 mg.  
(1.50 mg. equiv.)

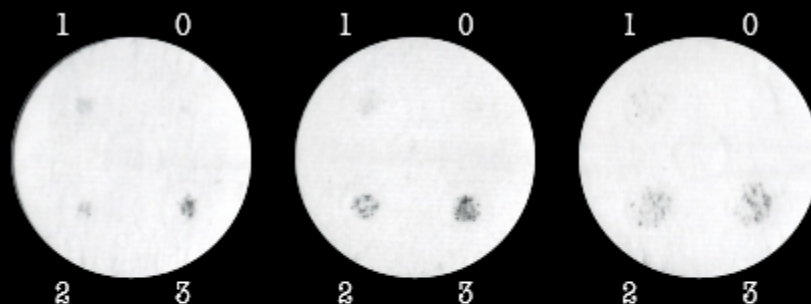


3  
0.3125 mg.  
(2.50 mg. equiv.)

United States Department of Agriculture Sediment  
Standards for Milk and Milk Products.

Prepared in cooperation with U.S. Food and Drug Administration  
and the American Public Health Association.

7 CFR 68.2731



0.10" Dia.

0 - 0.0 mg.  
(0.0 mg. equiv.)

1 - 0.0039 mg.  
(0.50 mg. equiv.)

2 - 0.0118 mg.  
(1.50 mg. equiv.)

3 - 0.0196 mg.  
(2.50 mg. equiv.)

0.14" Dia.

0 - 0.0 mg.  
(0.0 mg. equiv.)

1 - 0.0078 mg.  
(0.50 mg. equiv.)

2 - 0.0235 mg.  
(1.50 mg. equiv.)

3 - 0.0391 mg.  
(2.50 mg. equiv.)

0.20" Dia.

0 - 0.0 mg.  
(0.0 mg. equiv.)

1 - 0.0156 mg.  
(0.50 mg. equiv.)

2 - 0.0469 mg.  
(1.50 mg. equiv.)

3 - 0.0781 mg.  
(2.50 mg. equiv.)

United States Department of Agriculture  
Sediment Standards for Milk and Milk Products.

Prepared in cooperation with  
U.S. Food and Drug Administration  
and the American Public Health Association.

7 CFR 58.2732