

**THE VISUAL AIDS ON THE FOLLOWING
PAGES ARE FOR REFERENCE ONLY AND
NOT INTENDED FOR OFFICIAL USE.**

**TO PURCHASE OFFICIAL VISUAL AIDS PLEASE CONTACT
THE SPECIALTY CROPS INSPECTION DIVISION'S
EQUIPMENT AND FORMS DEPOT**

**USDA, AMS, FVP, SCI
831 MITTEN ROAD, ROOM 200
BURLINGAME, CA 94010
PHONE: 650-552-9073
FAX: 650-552-9147**

[EQUIPMENT CATALOG](#)



Agricultural Marketing Service, Specialty Crops Program, Specialty Crops Inspection Division

INDEX OF OFFICIAL VISUAL AIDS FOR POTATOES (POT.-L-1)

The Official Visual Aids for Potatoes (POT.-L-1) is a compilation of visual aids issued from May 1998 to the present. Please ensure this index is added to the front of the Official Visual Aids for Potatoes (POT.-L-1) Binder.

Photo(s)	Date	Page Number(s)
1-2	May 1998	1
3-4	July 2017	1
5-10	May 1998	1-2
11-13	July 2017	2-3
14-135	May 1998	3-29
136	July 2017	29
137-143	May 1998	29-30
Fingerling Potatoes Shape	August 2011	31
Netting (Identification Only)	August 2004	32
Elephant Hide	November 2013	33
Elephant Hide (Identification Only)	November 2013	34
Sprout Clusters on Potatoes	May 2015	35

“SCI moving forward in the 21st Century using technology, innovation, and old fashioned hard work”

USDA is an equal opportunity provider, employer, and lender.

UNITED STATES DEPARTMENT OF AGRICULTURE
AGRICULTURAL MARKETING SERVICE

OFFICIAL VISUAL AIDS FOR
POTATOES



MAY 1998

FRUIT AND VEGETABLE PROGRAMS
FRESH PRODUCTS BRANCH
WASHINGTON, D.C. 20250

The U.S. Department of Agriculture (USDA) prohibits discrimination in all its programs and activities on the basis of race, color, national origin, gender, religion, age, disability, political beliefs, sexual orientation, and marital or family status. (Not all prohibited bases apply to all programs.) Persons with disabilities who require alternative means for communication of program information (Braille, large print, audiotape, etc.) should contact the USDA's TARGET Center at (202) 720-2600 (voice and TDD).

To file a complaint of discrimination, write USDA, Director, Office of Civil Rights, Room 326-W, Whitten Building, 14th and Independence Avenue, SW, Washington, DC 20250-9410 or call (202) 720-5964 (voice or TDD). USDA is an equal employment opportunity provider and employer.

	Picture Number	Page
BASIC REQUIREMENTS		
FIRMNESS		
Not shriveled or flabby	1	1
Not seriously shriveled or flabby	2	1
CLEANNES		
Clean	3-4	1
Fairly clean	5-6	1
Slightly dirty	7-8	2
Not seriously damaged by dirt	9-10	2
SHAPE		
Well shaped	11-13	2-3
Fairly well shaped	14-17	3
Not seriously misshapen	18-22	3-4
U.S. No.1 - maximum allowed	22a	5
U.S. No. 2 - maximum allowed	22b-22c	5
SKINNING CLASSIFICATIONS		
Practically no skinning	23	6
Slightly skinned	24	6
Moderately skinned	25	6
Badly skinned	26	6
FREE FROM DEFECTS		
Blackheart	27-28	7
Freezing		
Dry type	29	7
Internal	30	7
Wet Breakdown - leaking	31	7
Late Blight Tuber Rot	32-34	7-8
Bacterial Ring Rot	35-36	8
Southern Bacterial Wilt	37-38	8
Bacterial Soft Rot	39	9
IDENTIFICATION		
Alternaria Tuber Rot (Early Blight)	40-41	10
Blackleg	42-43	10
Charcoal Rot	44-45	10
Corky Ring Spot	46-47a	11
Enlarged lenticels (coalesced)	48	11
Enlarged lenticels (raised)	49	11
Flea Beetle	50	11
Fusarium Tuber Rot	51-52b	12
Glassy End Rot (Jelly End Rot)	53	12
Grass	54	12
Greening	55	13
Grub	56-57	13

	Picture Number	Page
Heat or water damage	58-59	13
Ingrown sprouts	60-61	13-14
Internal Black Spot	62	14
Internal Brown Spot	63-64	14
Internal Purple Discoloration	64a	14
Leak	65-66	14-15
Mahogany Browning	67-68	15
Nematode	69-69b	15
Net Necrosis	70-71	16
Pink Eye	72-74	16
Pink Rot	75-76	16-17
Rodent damage	77	17
Scab, russet	77a-77b	17
Scab, surface	78-78a	17
Sclerotium Rot	79-80	18
Silver Scurf	81-82g	18-19
Skin spots	83-84	19-20
Stem End Browning	85	20
Sunburn	86-87	20
Tuber Moth	88-89	20
Vascular discoloration	90-91	21
Worm damage	92-93	21
CLASSIFICATION OF DEFECTS		
AIR CRACKS		
U.S. No. 1	94-95	22
U.S. No. 2	96	22
BRUISES		
U.S. No. 1	97	22
U.S. No. 2	98-99	22
CUTS		
U.S. No. 1	100-101 ¹	23
ENLARGED LENTICELS		
U.S. No. 1	105-106	23
U.S. No. 2	107	23
EXTERNAL DISCOLORATION		
U.S. No. 1	108-111	23-24
U.S. No. 2	112-113	24
FOLDED END		
U.S. No. 1	114-115	24-25
U.S. No. 2	116-117	25

¹See Potato Shipping Point and Market Inspection Instructions for illustrations 102-104.

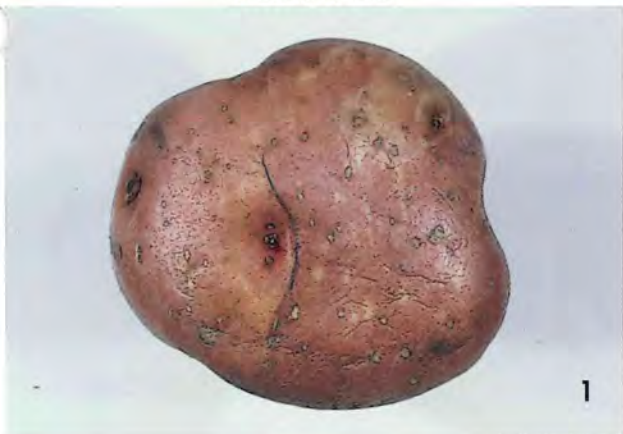
	Picture Number	Page
GROWTH CRACKS		
U.S. No. 1	118	25
U.S. No. 2	119-120	25
HOLLOW HEART		
U.S. No. 1	121	26
U.S. No. 2	122	26
Measuring examples		
U.S. No. 1	122a-122b	26
Damage	122c-122e	26-27
INTERNAL DISCOLORATION		
U.S. No. 1	123	27
U.S. No. 2	124	27
RHIZOCTONIA		
U.S. No. 1	125-126	27
RUSSETING		
U.S. No. 1	127-128	27-28
SCAB, PITTED		
U.S. No. 1	129	28
U.S. No. 2	130	28
SECOND GROWTH		
U.S. No. 1	131-132 ²	28
SKIN CHECKS		
U.S. No. 1	134	28
U.S. No. 2	135	29
SPROUTS (clusters)		
U.S. No. 1	136	29
FLATTENED OR DEPRESSED AREAS		
U.S. No. 1	137	29
SUNKEN DISCOLORED AREAS		
U.S. No. 2	138	29
SURFACE CRACKS (netting)		
U.S. No. 1	139-140	29
U.S. No. 2	141-142	30
SCAB, RUSSET		
U.S. No. 1	143	30

²See Potato Shipping Point and Market Inspection Instructions for illustration 133.

BASIC REQUIREMENTS

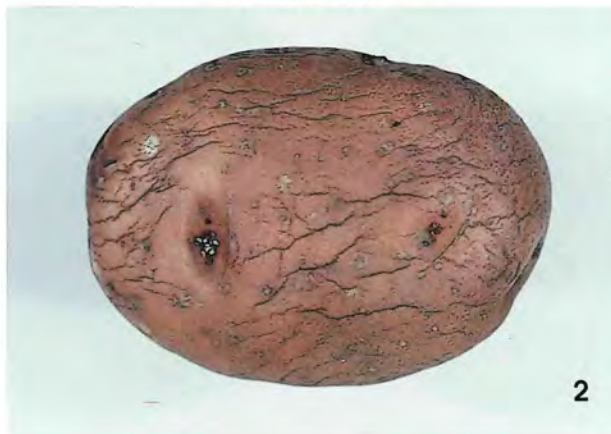
1

FIRMNESS



Not shriveled or flabby
U.S. No. 1 - maximum allowed

FIRMNESS



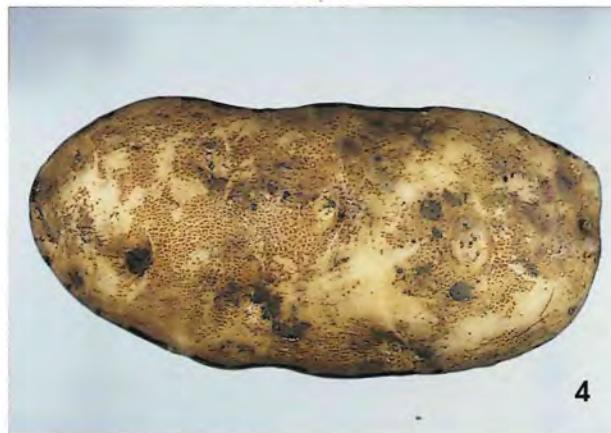
Not seriously shriveled or flabby
U.S. No. 2 - maximum allowed

CLEANNES



Clean (dry) - Identification Only
Not a basic requirement
(July 2017)

CLEANNES

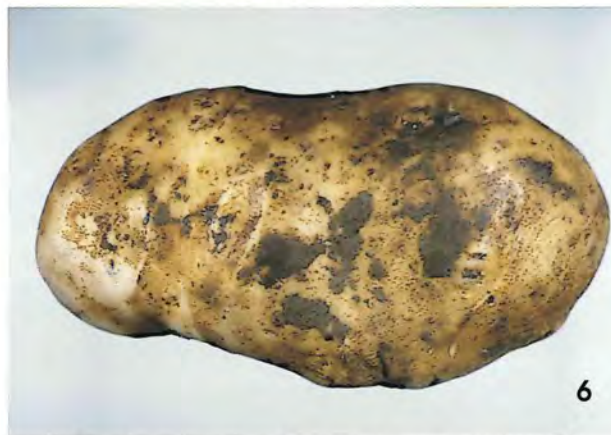


Clean (wet) - Identification Only
Not a basic requirement
(July 2017)

CLEANNES



Fairly clean (dry) - maximum allowed*



Fairly clean (wet) - maximum allowed*

*Equal amount or less allowed on opposite side.

CLEANNES



7

Slightly dirty (dry)*

CLEANNES



8

Slightly dirty (wet)*

CLEANNES



9

Not seriously damaged by dirt
U.S. No. 2 - maximum allowed

CLEANNES



10

Not seriously damaged by dirt
U.S. No. 2 - maximum allowed

SHAPE



11

Well Shaped - Identification Only
Not a basic requirement
(July 2017)

SHAPE

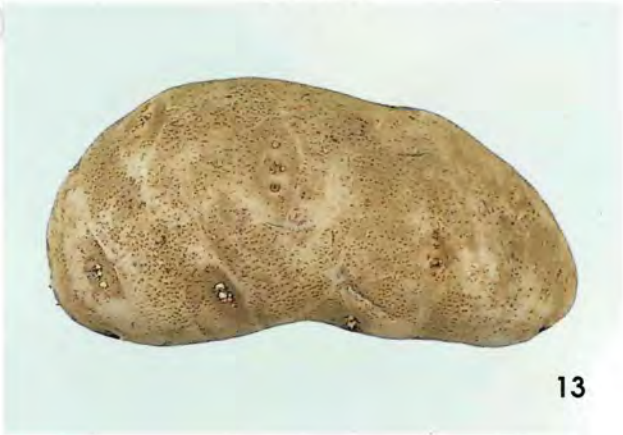


12

Well Shaped - Identification Only
Not a basic requirement
(July 2017)

*Equal amount or less allowed on opposite side.

SHAPE



Well Shaped - Identification Only
Not a basic requirement
(July 2017)

SHAPE



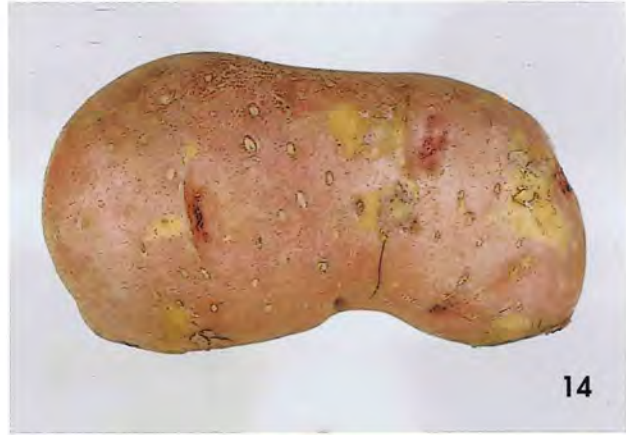
Fairly well shaped
U.S. No. 1 - maximum allowed

SHAPE



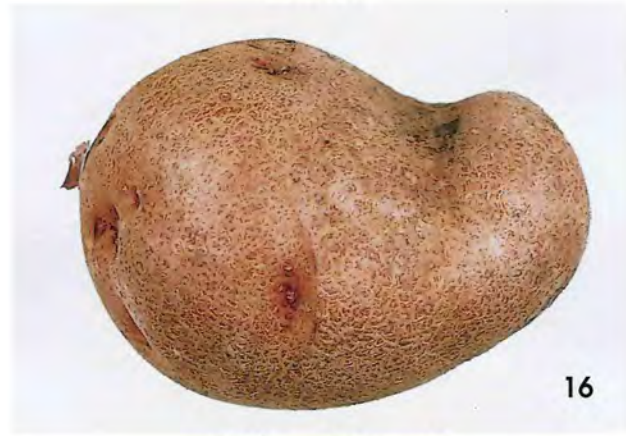
Fairly well shaped
U.S. No. 1 - maximum allowed

SHAPE



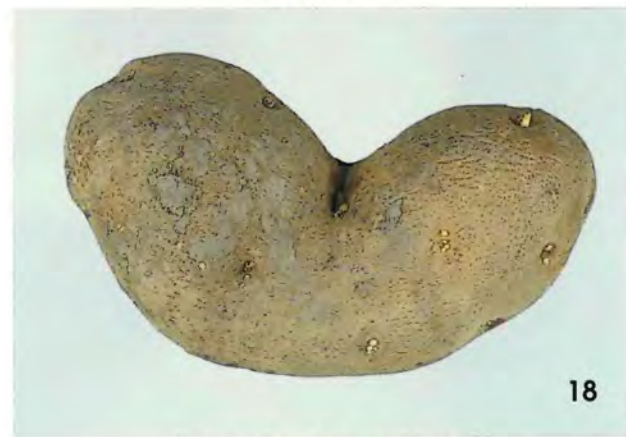
Fairly well shaped
U.S. No. 1 - maximum allowed

SHAPE



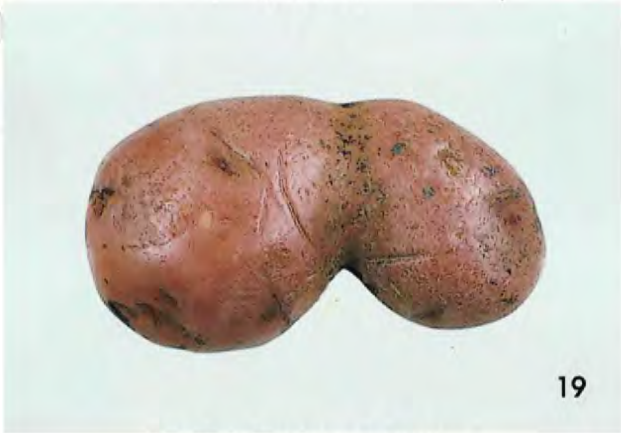
Fairly well shaped
U.S. No. 1 - maximum allowed

SHAPE



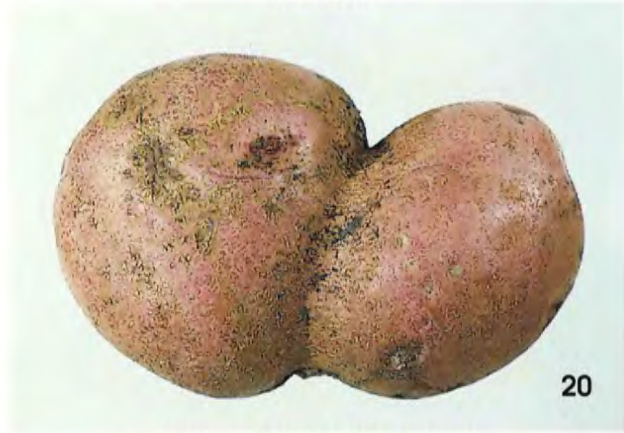
Not seriously misshapen
U.S. No. 2 - maximum allowed

SHAPE



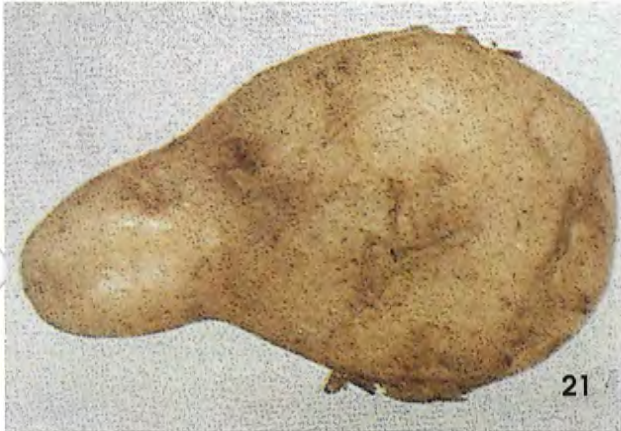
Not seriously misshapen
U.S. No. 2 - maximum allowed

SHAPE



Not seriously misshapen
U.S. No. 2 - maximum allowed

SHAPE



Not seriously misshapen
U.S. No. 2 - maximum allowed

SHAPE



Not seriously misshapen
U.S. No. 2 - maximum allowed

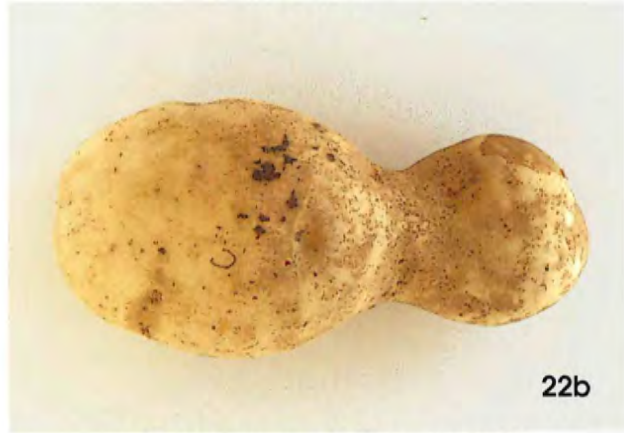
SHAPE



22a

U.S. No. 1 - maximum allowed

SHAPE



22b

U.S. No. 2 - maximum allowed

SHAPE



22c

U.S. No. 2 - maximum allowed



Practically no skinning*



Slightly skinned*



Moderately skinned*



Badly skinned*

*Equal amount or less allowed on opposite side.

FREE FROM DEFECTS
Any amount scored against all grades.

7



27

Blackheart



28

Blackheart



29

Freezing injury (dry type)



30

Freezing injury (internal)



31

Freezing injury (wet-leaking)



32

Late Blight Tuber Rot

FREE FROM DEFECTS
Any amount scored against all grades.

8



Late Blight Tuber Rot



Late Blight Tuber Rot



Bacterial Ring Rot



Bacterial Ring Rot



Southern Bacterial Wilt (Brown Rot)



Southern Bacterial Wilt (Brown Rot)

FREE FROM DEFECTS
Any amount scored against all grades.

9



Bacterial Soft Rot (Slimy Soft Rot)



40

Alternaria Tuber Rot (Early Blight)



41

Alternaria Tuber Rot (Early Blight)



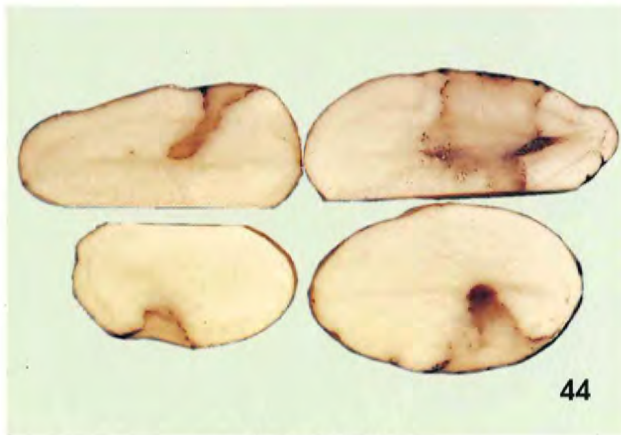
42

Blackleg



43

Blackleg



44

Charcoal Rot



45

Charcoal Rot



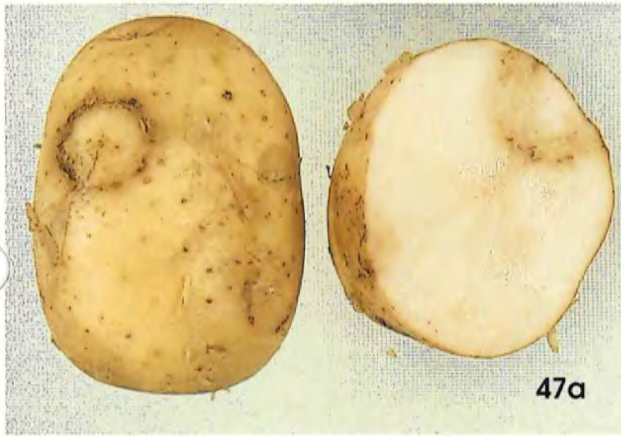
46

Corky Ring Spot



47

Corky Ring Spot



47a

Corky Ring Spot



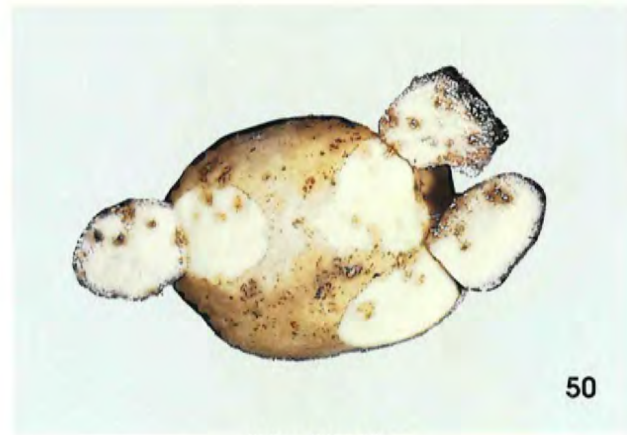
48

Enlarged lenticels (coalesced)



49

Enlarged lenticels (raised)



50

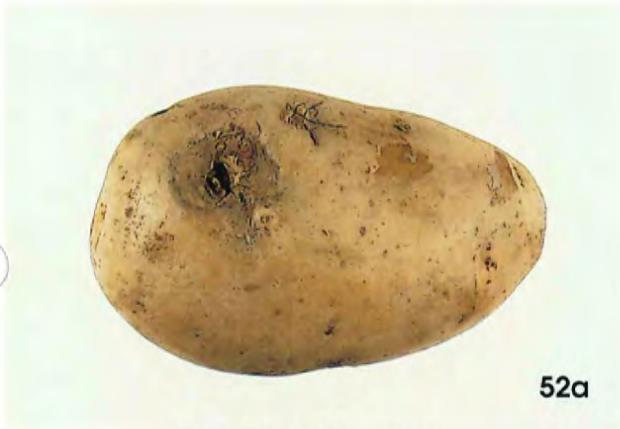
Flea Beetle



Fusarium Tuber Rot



Fusarium Tuber Rot



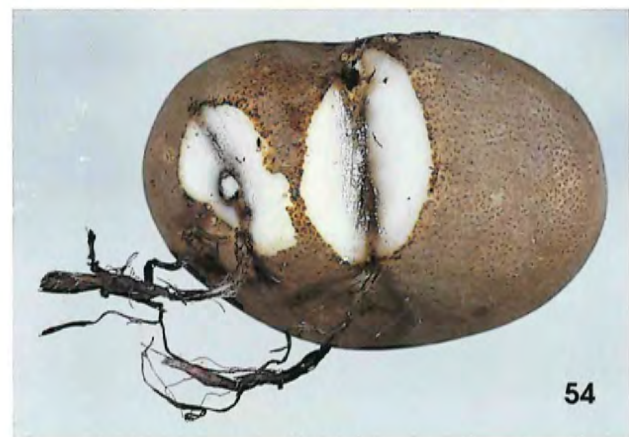
Fusarium Tuber Rot



Fusarium Tuber Rot



Glassy End Rot (Jelly End Rot)



Grass



55

Greening



56

Grub



57

Grub



58

Heat or water damage



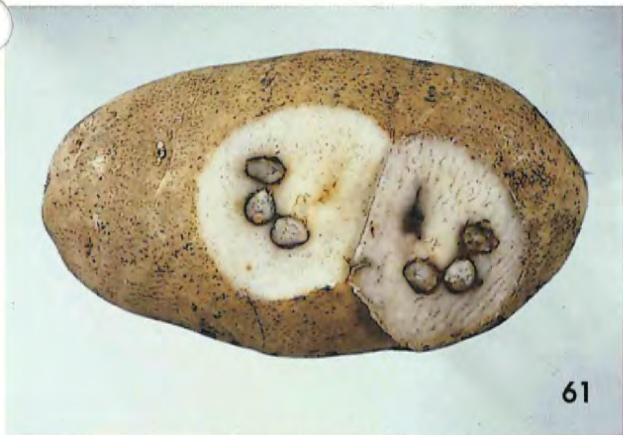
59

Heat or water damage



60

Ingrown sprouts



61

Ingrown sprouts



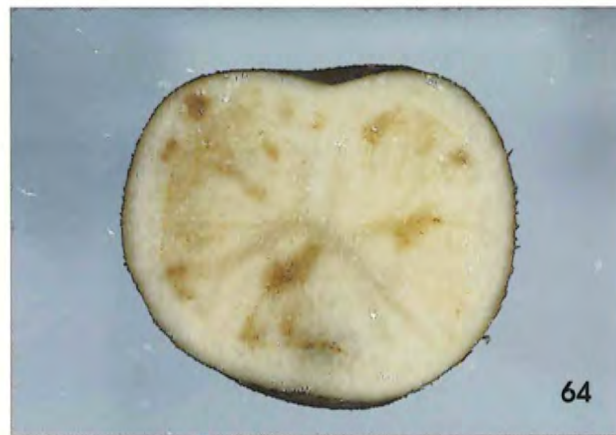
62

Internal Black Spot



63

Internal Brown Spot



64

Internal Brown Spot



64a

Internal Purple Discoloration



65

Leak



Leak

66



Mahogany Browning

67



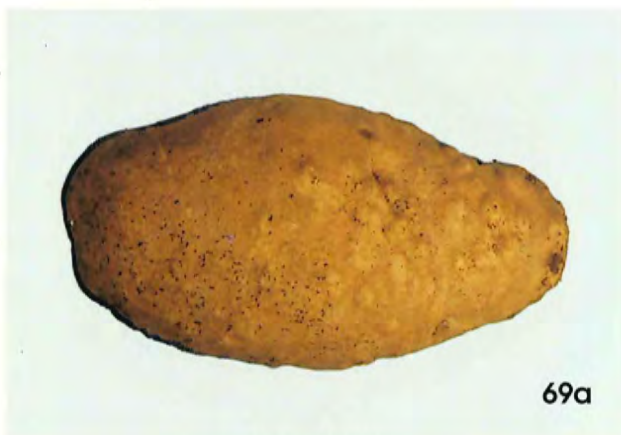
Mahogany Browning

68



Nematode

69



Nematode

69a



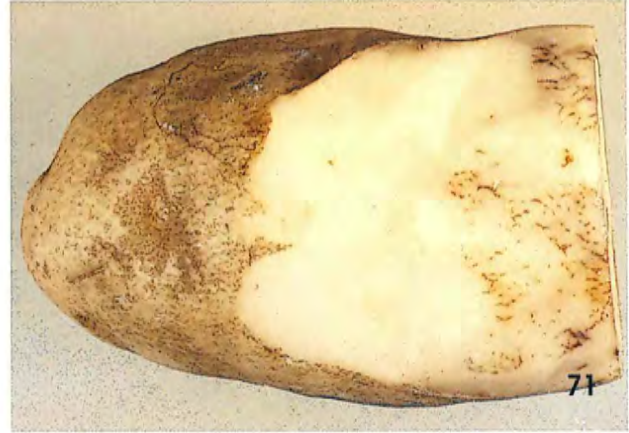
Nematode

69b



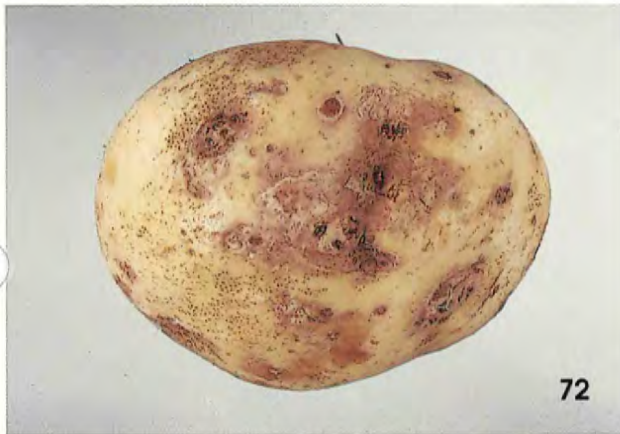
Net Necrosis

70



Net Necrosis

71



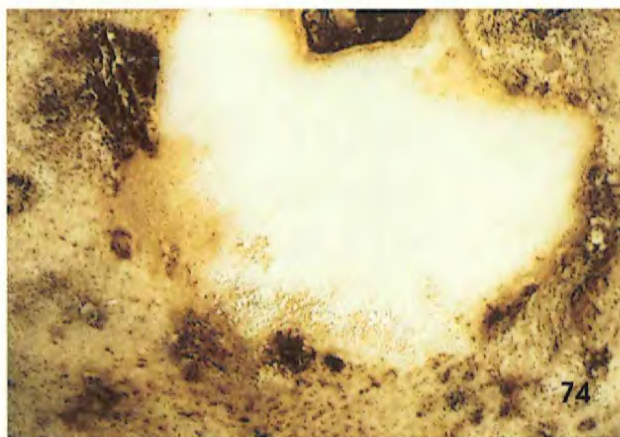
Pink Eye

72



Pink Eye

73



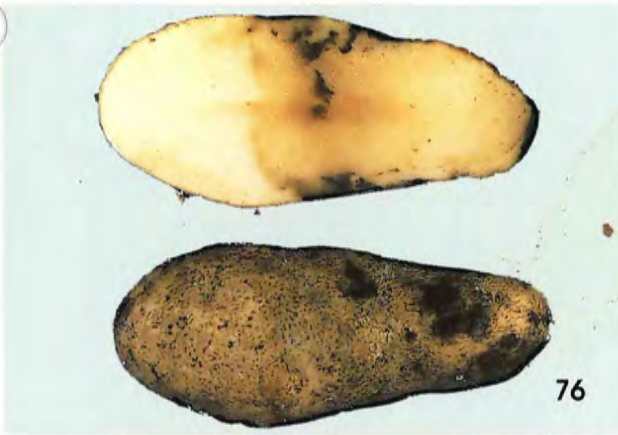
Pink Eye

74



Pink Rot

75



Pink Rot

76



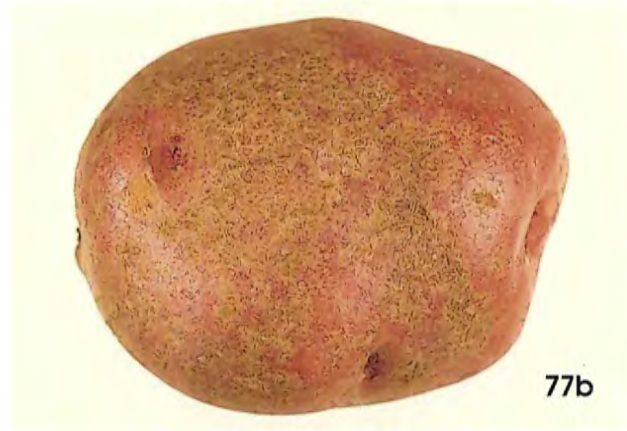
Rodent damage

77



Scab, russet

77a



Scab, russet

77b



Scab, surface

78



Scab, surface

78a



79

Sclerotium Rot



80

Sclerotium Rot



81

Silver Scurf



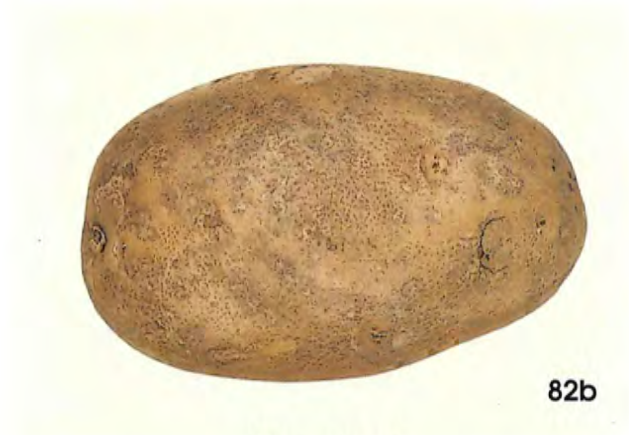
82

Silver Scurf



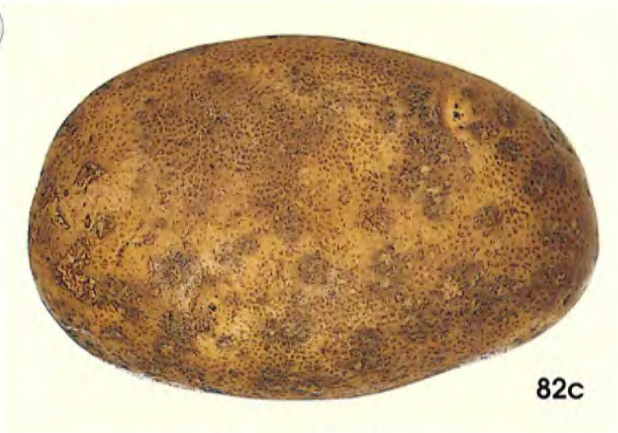
82a

Silver Scurf



82b

Silver Scurf



82c

Silver Scurf



82d

Silver Scurf



82e

Silver Scurf



82f

Silver Scurf



82g

Silver Scurf



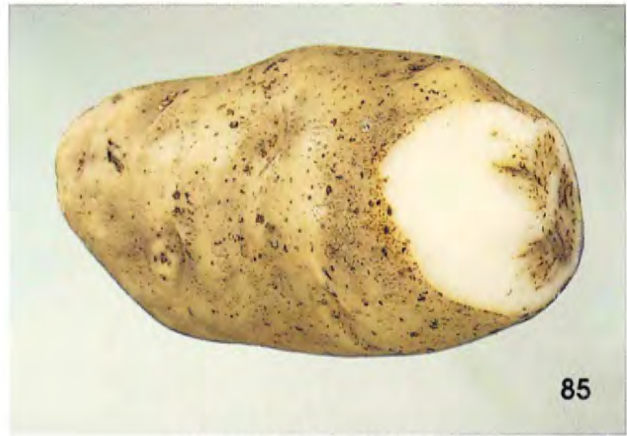
83

Skin spots



84

Skin spots



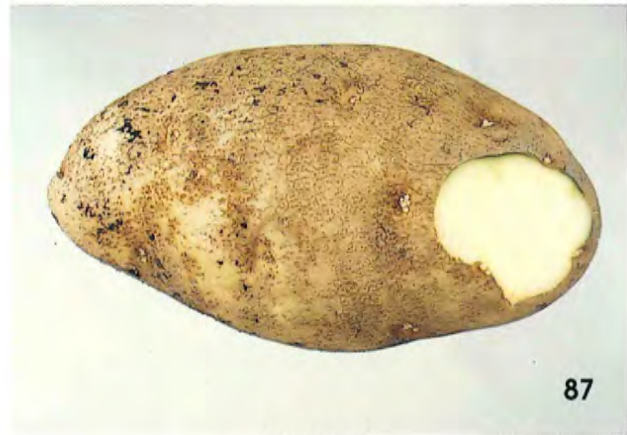
85

Stem End Browning



86

Sunburn



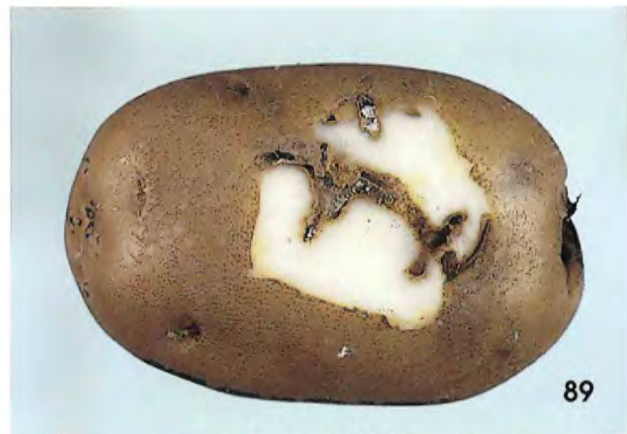
87

Sunburn



88

Tuber Moth



89

Tuber Moth



90

Vascular discoloration



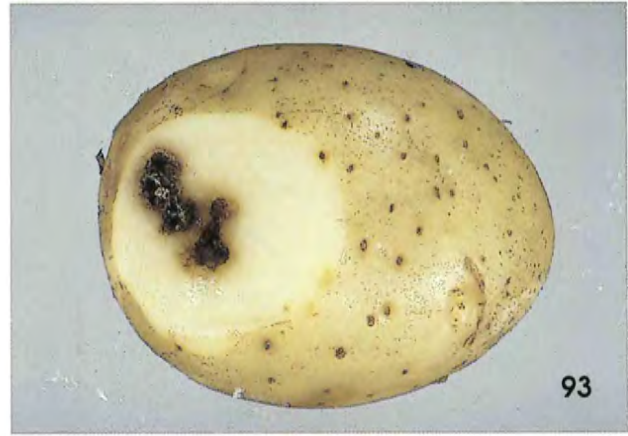
91

Vascular discoloration



92

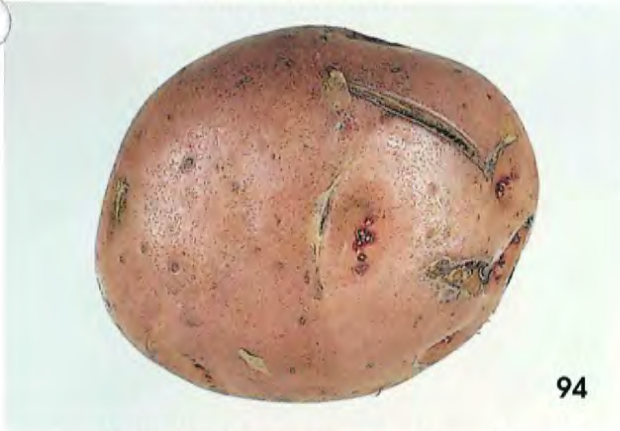
Worm damage



93

Worm damage

AIR CRACKS



94

U.S. No. 1 - maximum allowed

AIR CRACKS



95

U.S. No. 1 - maximum allowed

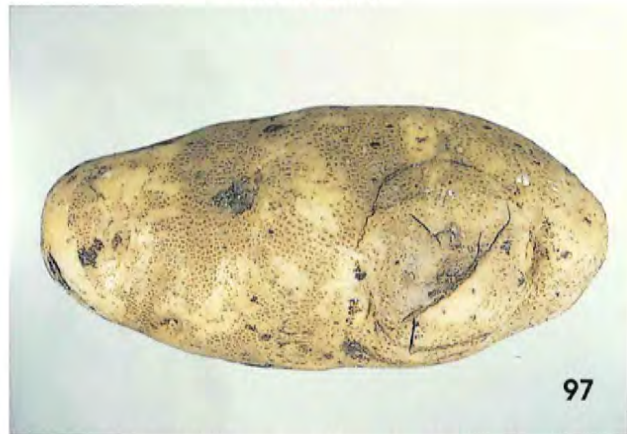
AIR CRACKS



96

U.S. No. 2 - maximum allowed

BRUISES



97

U.S. No. 1 - maximum allowed

BRUISES



98

U.S. No. 2 - maximum allowed

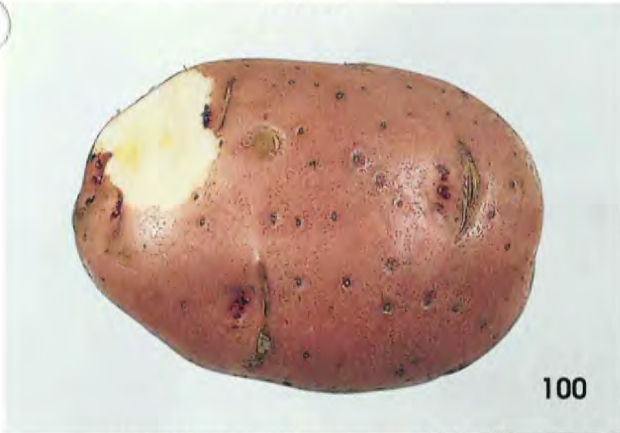
BRUISES



99

U.S. No. 2 - maximum allowed

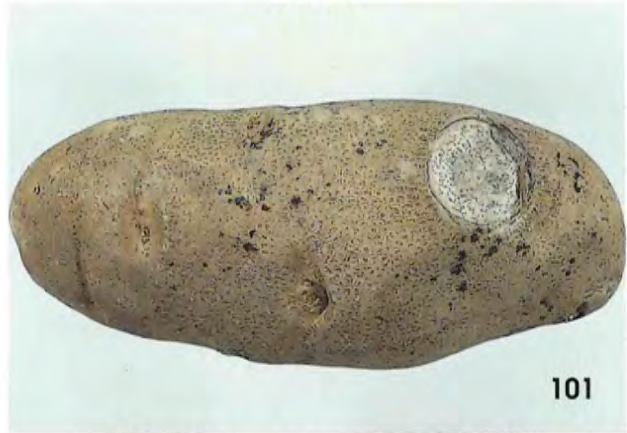
CUTS



100

U.S. No. 1 - maximum allowed

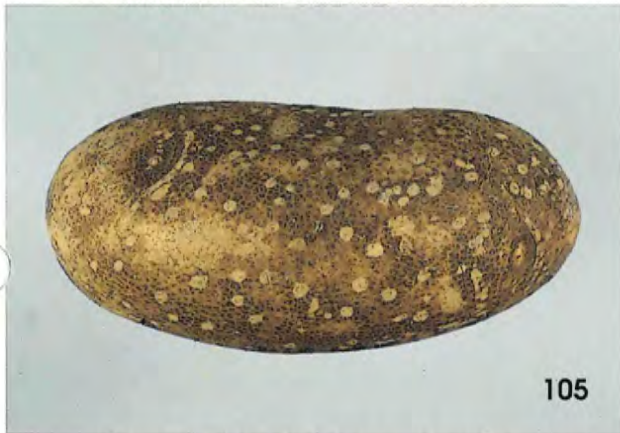
CUTS



101

U.S. No. 1 - maximum allowed

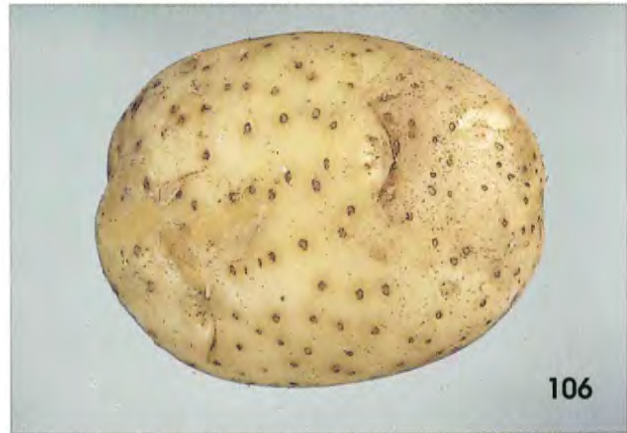
ENLARGED LENTICELS



105

U.S. No. 1 - maximum allowed*

ENLARGED LENTICELS



106

U.S. No. 1 - maximum allowed*

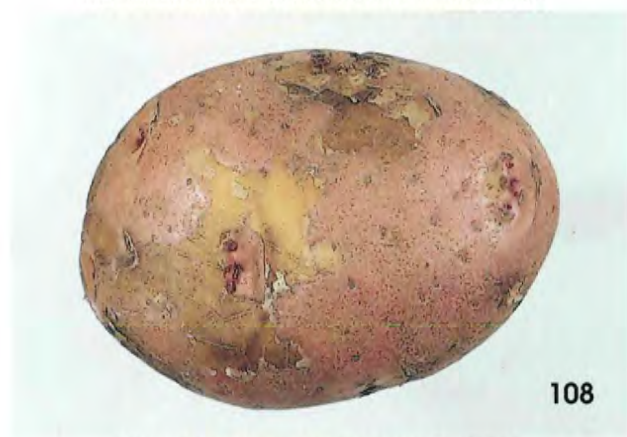
ENLARGED LENTICELS



107

U.S. No. 2 - maximum allowed*

EXTERNAL DISCOLORATION

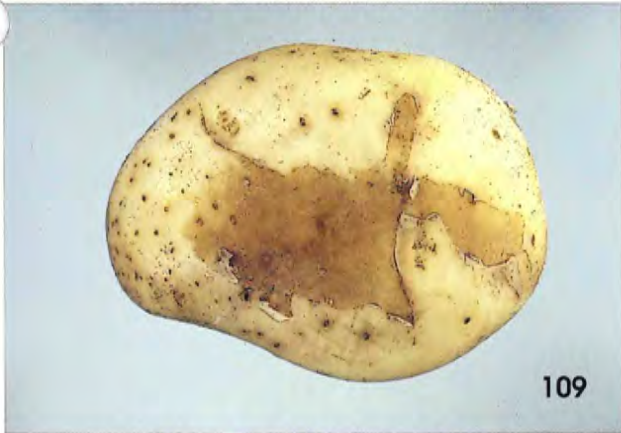


108

U.S. No. 1 - maximum allowed

*Equal amount or less allowed on opposite side.

EXTERNAL DISCOLORATION



U.S. No. 1 - maximum allowed

EXTERNAL DISCOLORATION



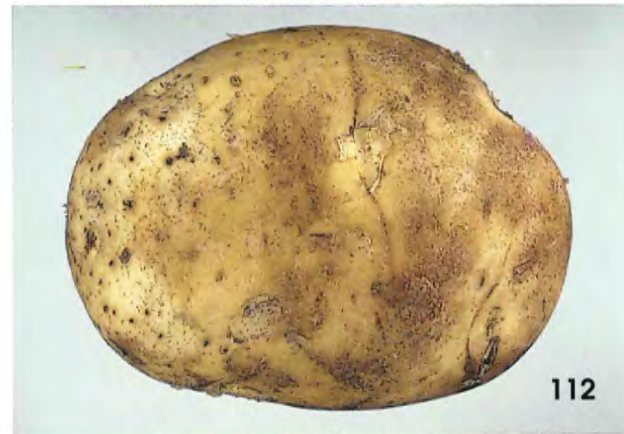
U.S. No. 1 - maximum allowed*

EXTERNAL DISCOLORATION



U.S. No. 1 - maximum allowed*

EXTERNAL DISCOLORATION



U.S. No. 2 - maximum allowed

EXTERNAL DISCOLORATION



U.S. No. 2 - maximum allowed*

FOLDED END



U.S. No. 1 - maximum allowed

*Equal amount or less allowed on opposite side.

FOLDED END



115

U.S. No. 1 - maximum allowed

FOLDED END



116

U.S. No. 2 - maximum allowed

FOLDED END



117

U.S. No. 2 - maximum allowed

GROWTH CRACKS



118

U.S. No. 1 - maximum allowed

GROWTH CRACKS



119

U.S. No. 2 - maximum allowed

GROWTH CRACKS



120

U.S. No. 2 - maximum allowed

HOLLOW HEART



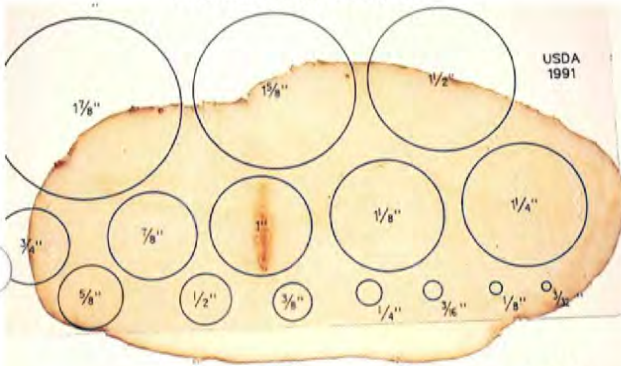
U.S. No. 1 - maximum allowed

HOLLOW HEART



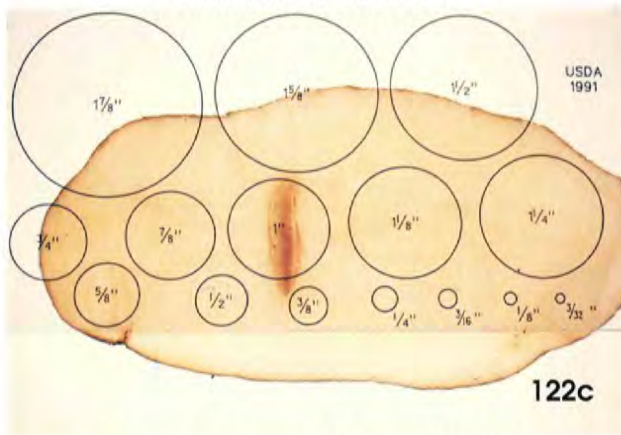
U.S. No. 2 - maximum allowed

HOLLOW HEART



U.S. No. 1 - within area allowed
(14 ounce potato)

HOLLOW HEART



Damage - exceeds area allowed
(for U.S. No. 1 - 14 ounce potato)

HOLLOW HEART



Enlargement of 122a

U.S. No. 1 - within area allowed
(14 ounce potato)

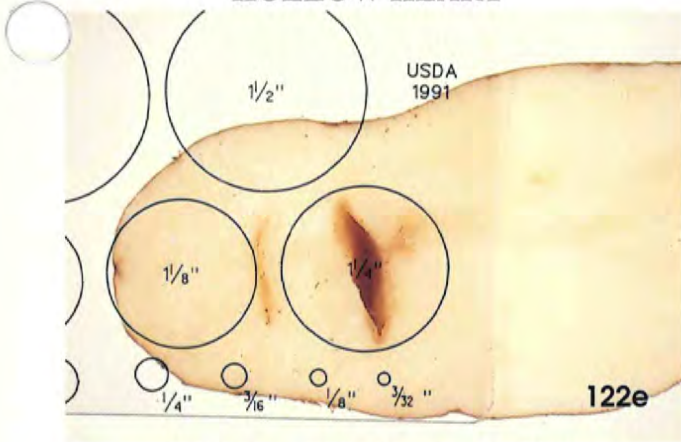
HOLLOW HEART



Enlargement of 122c

Damage - exceeds area allowed
(for U.S. No. 1 - 14 ounce potato)

HOLLOW HEART



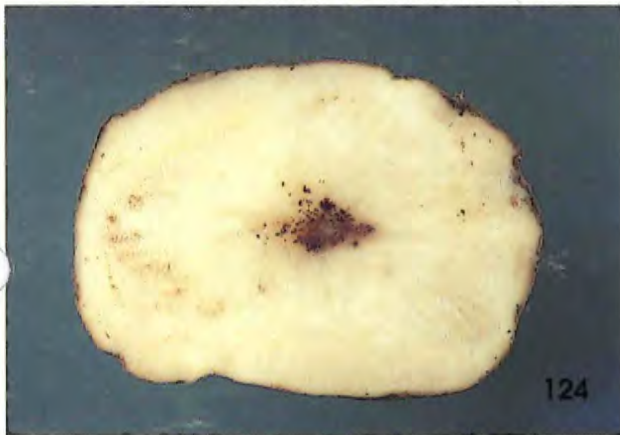
Damage - exceeds area allowed (for U.S. No. 1 - 20 ounce potato)

INTERNAL DISCOLORATION



U.S. No. 1 - maximum allowed

INTERNAL DISCOLORATION



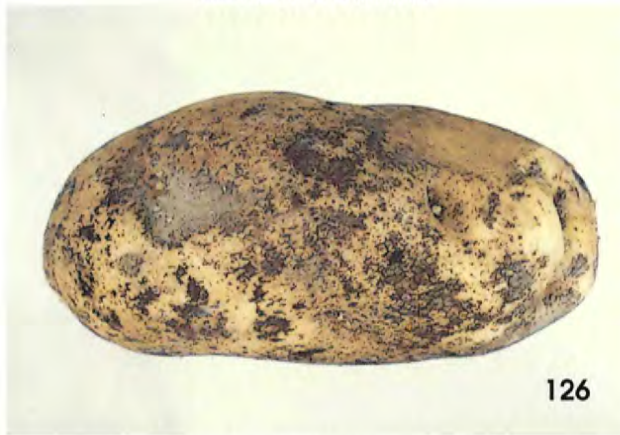
U.S. No. 2 - maximum allowed

RHIZOCTONIA



U.S. No. 1 - maximum allowed

RHIZOCTONIA



U.S. No. 1 - maximum allowed

RUSSETING

(for non-russet type potatoes)



U.S. No. 1 - maximum allowed*

*Equal amount or less allowed on opposite side.

RUSSETING
(for non-russet type potatoes)



128

U.S. No. 1 - maximum allowed*

SCAB, PITTED



129

U.S. No. 1 - maximum allowed

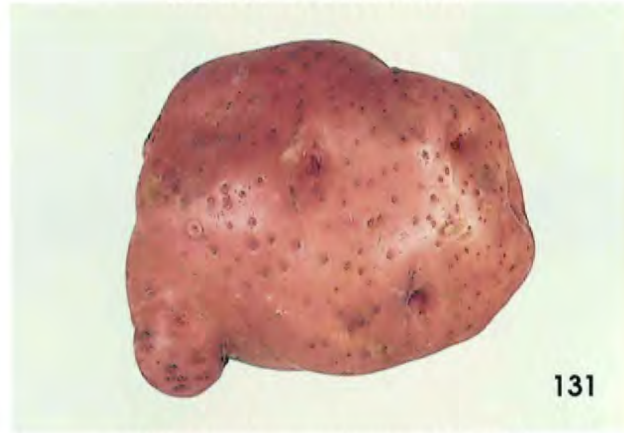
SCAB, PITTED



130

U.S. No. 2 - maximum allowed

SECOND GROWTH



131

U.S. No. 1 - maximum allowed

SECOND GROWTH



132

U.S. No. 1 - maximum allowed

SKIN CHECKS



134

U.S. No. 1 - maximum allowed*

*Equal amount or less allowed on opposite side.

SKIN CHECKS



135

U.S. No. 2 - maximum allowed*

SPROUTS, CLUSTERS



136

U.S. No. 1 - maximum allowed
(July 2017)

FLATTENED OR DEPRESSED AREAS



137

U.S. No. 1 - maximum allowed

SUNKEN DISCOLORED AREAS



138

U.S. No. 2 - maximum allowed

SURFACE CRACKS



139

U.S. No. 1 - maximum allowed

SURFACE CRACKS

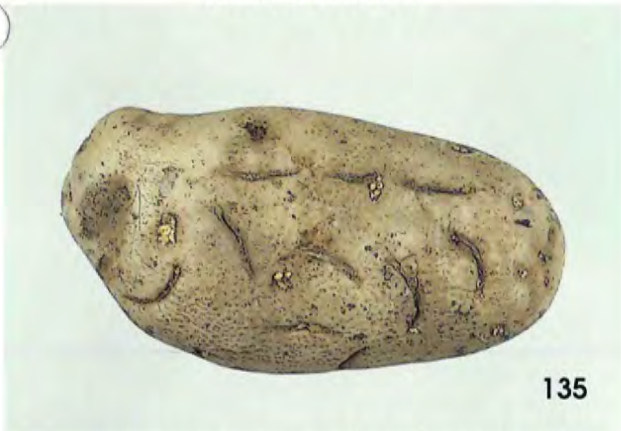


140

U.S. No. 1*

*Equal amount or less allowed on opposite side.

SKIN CHECKS



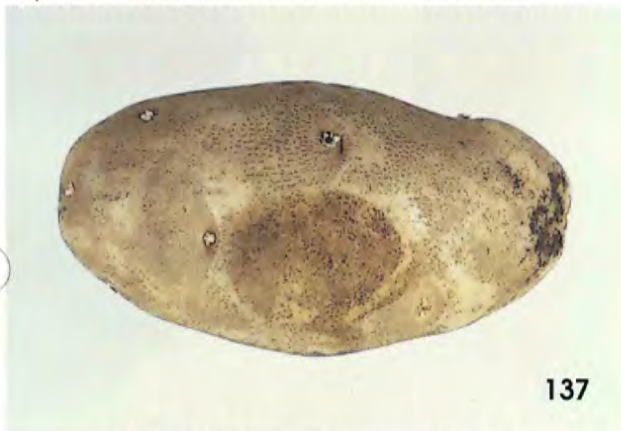
U.S. No. 2 - maximum allowed*

SPROUTS, CLUSTERS



U.S. No. 1 - maximum allowed

FLATTENED OR DEPRESSED AREAS



U.S. No. 1 - maximum allowed

SUNKEN DISCOLORED AREAS



U.S. No. 2 - maximum allowed

SURFACE CRACKS



U.S. No. 1 - maximum allowed

SURFACE CRACKS



U.S. No. 1*

*Equal amount or less allowed on opposite side.

SURFACE CRACKS



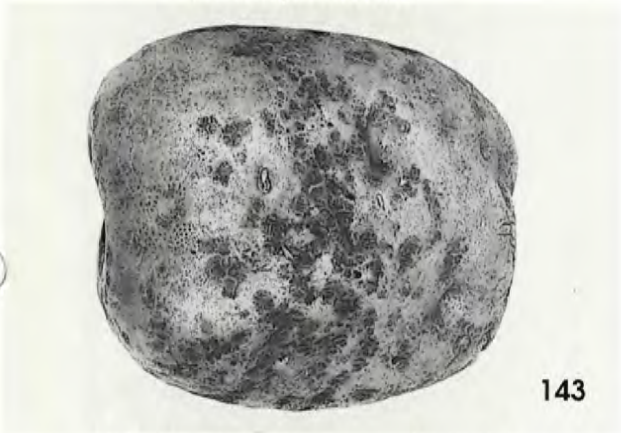
U.S. No. 2 - maximum allowed*

SURFACE CRACKS



U.S. No. 2 - maximum allowed

SCAB, RUSSET



U.S. No. 1 - maximum allowed*

*Equal amount or less allowed on opposite side.

FINGERLING POTATOES SHAPE



Three Varieties
ID Only



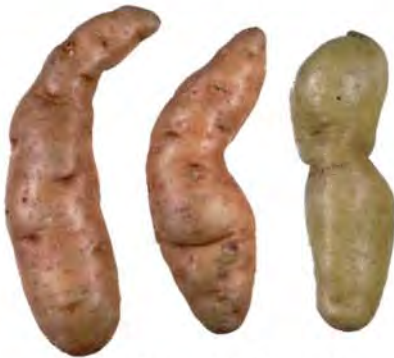
Deep eyes
ID Only



Well shaped
ID Only



Fairly well shaped
U.S. No. 1



Fairly well shaped
U.S. No. 1



Fairly well shaped
U.S. No. 1



Not seriously misshapen
U.S. No. 2



Not seriously misshapen
U.S. No. 2

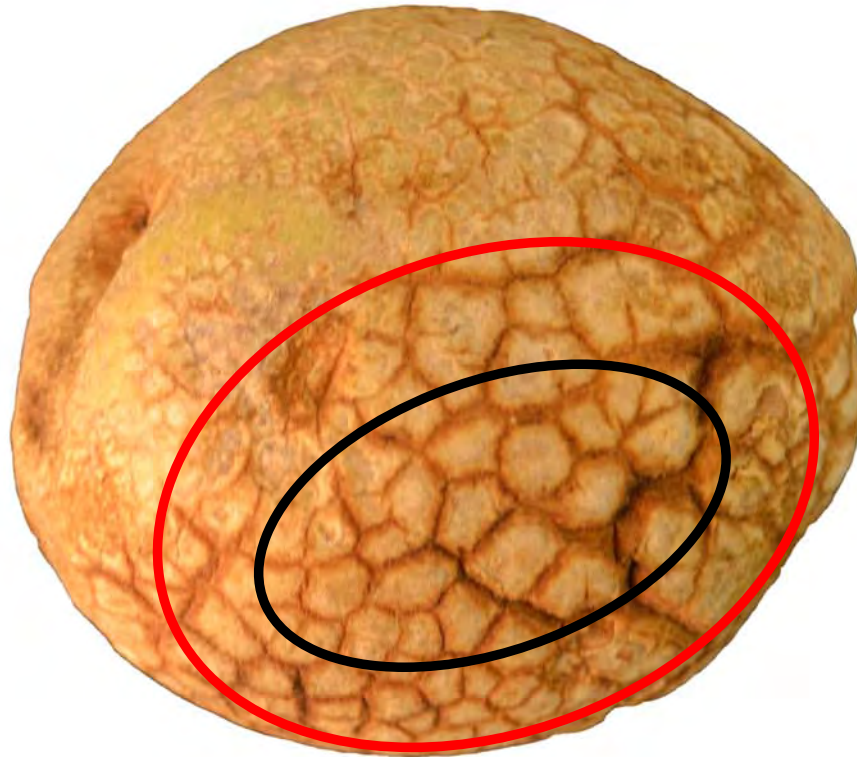
IDENTIFICATION ONLY NETTING



Score netting which is rough and raised when affecting more than 50 percent of the surface as damage by "Rough Raised Netting." (Photograph enlarged to show detail.)

ELEPHANT HIDE

When skin is severely roughened, cracked, and scaled as shown, then score as:



USDA Visual Aid POT.-L-1-November 2013

Damage: When affecting over 10% of surface (black circle covers 10% of surface).
Serious Damage: When affecting over 25% of surface (red circle covers 25% of surface).



IDENTIFICATION ONLY
ELEPHANT HIDE

Early/Superficial Stage - Not Scorable

Photo courtesy of Lane Selman, Oregon State University

SPROUT CLUSTERS ON POTATOES

(Examples only: Not minimum or maximum amounts allowed)

Not Scorable



Damage



Serious Damage



Not Scorable



Damage



Serious Damage



Not Scorable



Damage



Serious Damage

